



MBSC Monthly

NEWSLETTER FROM THE MIDDLETON BASEBALL & SOFTBALL COMMISSION

Mark Your Calendar!

- Feb 28, March 1, 7 & 8 • Registration in MHS IMC 6pm-8pm
- March 15 • Next MBSC Commission Meeting 7:30pm
- April 3 • Competition Teams Softball Evaluations **NO alternate tryout dates**
- April 9 • Competition Teams Baseball Evaluations **NO alternate tryout dates**
- May 15 • Annual MBSC Pig Roast **Now in Spring!!**

Please visit mbscwi.com if you need any information.

MBSC Major Donation Announced

The January 11, 2011 MBSC board meeting resulted in a very pleasant surprise donation. Eric Haag, an attorney with Gingras, Cates & Luebke (GCL) attended the meeting to present MBSC with a special gift. GCL had been working with Axley Brynelson law firm on a class action lawsuit. Residual money, leftover from the judgment, became available to the law firms to distribute to their selected charities.

MBSC was chosen as one of several local charities. Eric presented MBSC with a substantial financial contribution. Specific requests were made by GCL to use the money to provide batting cages at local fields and help reduce the Commission's loan balance on the concession/restroom building at Fire Fighters Baseball Softball Complex. MBSC graciously accepted this donation and is already planning to construct the batting cages in hopes to have them ready for the 2011 season.

A heartfelt thank you from MBSC and all its participants goes out to the two law firms and all of the attorneys who made this generous donation.



2011 Registration

Registration dates are set for February 28 and March 1, 7 & 8 between the hours of 6 and 8 PM. Registration will be held in the MHS IMC. The fee schedule is as follows:

Registration Base Fees

Baseball:		Softball:	
Instructional	\$100	Little Brewers	\$100
Little Bucks	\$110	Cardinal	\$110
Pepper	\$110	Minor Rec	\$110
Cal Ripken	\$110*	Junior Rec	\$110
Triple A	\$125	Senior Rec	\$110
Babe Ruth 13	\$175	South Central	\$110*
Babe Ruth 14-15	\$200		
Legion	\$180		

*Cal Ripken has an extra fee of \$100 and South Central has an extra fee of \$75. Fees include two tickets for the Pig Roast. \$20 late fee assessed after March 8th.

Registration will combine face-to-face Q&A with league directors and online data input for registration.

Credit card payments will be accepted at registration. A \$2.72 service charge will be added to your registration fee if you choose to pay by credit card. Checks or cash are encouraged.

We highly recommend attending one of the personal registration dates so that any and all questions can be answered. This also gives the league directors a good understanding of participant numbers so they can start the planning process early – ensuring a quality league for your son or daughter.

continued on Page 2

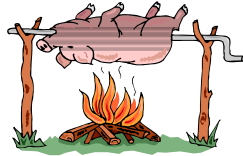


Registration, cont... Additionally, we will be requesting volunteers to assist many of the committee chairpersons throughout the upcoming season. There are many jobs and responsibilities that you can help with. Please consider how your skills can help make our kids' programs a better experience.

If you cannot attend one of the dates at the IMC, you may still register online. Competitive programs registration will close April 3, 2011, while recreational programs will remain open until May 13, 2011. For program descriptions, please visit the MBSC website.

2011 Pig Roast

Please note this year's MBSC Pig Roast will be held **May 15** at the Middleton Sport Bowl. Each participant in MBSC will receive two tickets to the event as part of the player's registration fees. Additional tickets may be purchased at registration. This is an important fund raiser for the program. Please put the date in your calendar and plan to attend. More information will follow in future newsletters and can also be found on the website.



MBSC Coach Improvement

The MBSC coach and player development committee has been diligently working on ways to help all players improve their skills. Many times a player's improvement has a direct correlation to skills introduced by his or her coach. Later this spring, MBSC will post on its website a series of streaming online videos that focus on supporting and providing coaches with training, tools, and resources to help their players improve their skills and have more fun in the process. Topics of the videos will include: What is Important to MHS Baseball and Softball Programs, Pitching, Hitting, Practice Organization, Setting Expectations and Handling Difficult Situations, Field Maintenance, along with other links to drills and guides. We expect that this information will make coaching easier for all volunteers, regardless of their experience, and help coaches improve the experience for all participants in MBSC programs.

MBSC hopes to have the training videos available on the website March 1st.

Performance Secrets

These secrets were taken from the January issue of *Batter Up*, the official newsletter of Babe Ruth League. They are appropriate for any sport, skill, or profession. Read and implement into your life.

Performance Secrets of the World's Best Softball Players

Finally revealed...the top performance secrets of the World's Best Softball Players. Read Secrets 7 through 15.

7. Build a success portfolio where you will collect all of the evidence of success you have achieved in the past and that you will achieve in the future. This will be a strong reminder of how exceptional and amazing you are when you feel a little down. Even more important, you will build the habit of focusing on the positives rather than the negatives.
8. Build a supportive social network. People that we hang out and live with have a great influence on ourselves. Surrounding yourself with supportive people is crucial.
9. Have a lifestyle that supports your goals. Trying to become an elite athlete requires some sacrifices. Always ask yourself, is what I am doing right now bringing me closer to my dreams?
10. Quality before quantity. Working hard is important, there is no question there. Working smart is just as important. It's better to have two excellent workouts or pitching sessions than five lousy ones. It's better to hit or pitch with a totally focused mind for 20 minutes than going through the motions for 60 minutes.
11. Become highly self-disciplined. Self-discipline is the magic power that makes you virtually unstoppable. It is one of the most common traits of the world's most successful people. Don't let temptations or obstacles get in the way of what you have to do.
12. Visualize success. This is one of the most powerful mental skills. If you can visualize yourself being successful and control the thoughts in your head, your confidence will skyrocket and your performance will be much more consistent.
13. Take control of your little voice. Negative self-talk can be very destructive. It will take time before you take control of it, but it is definitely worth the effort. Being positive is a common characteristic of highly successful people.
14. Practice absolute punctuality. Some coaches tell their athletes that if they are on time, they are late. Don't only show up on time, but early to all your meetings, training sessions, practices and games. The top athletes in the world are never late.
15. Spend time by yourself to relax. Elite softball players are passionate about the game. They sleep, breath and eat softball every day and that's the way it has to be to achieve high level successes. However, take time off once in a while to rejuvenate. Do something totally unrelated to softball and enjoy it.



New Bat Rules for Cal Ripken & Babe Ruth Leagues for 2011

There has been a lot of confusion and information sent out recently about approved bats for youth baseball. MBSC plays its games as part of Babe Ruth League, Inc. Therefore, we follow all rules sanctioned by that organization. The following is the latest information direct from the Babe Ruth League Headquarters.

"Babe Ruth League, Inc. is lifting the moratorium on composite bats for the Cal Ripken Division effective immediately. This applies only to the 2 1/4" barrel bats.

All bats must be stamped "Approved For Play in Babe Ruth Baseball" and meet the requirement of Rule 1.10 in the Babe Ruth League, Inc. 2011 Baseball Rules and Regulations for 2 1/4" baseball bats.

Note: The Babe Ruth 13-15 and 16-18 Baseball age divisions will continue to have the moratorium in force as explained in the memo dated October 26, 2010. As was stated in this memo, all approved composite bat models for the Babe Ruth 13-15 and 16-18 Baseball Divisions are listed at www.nfhs.org.

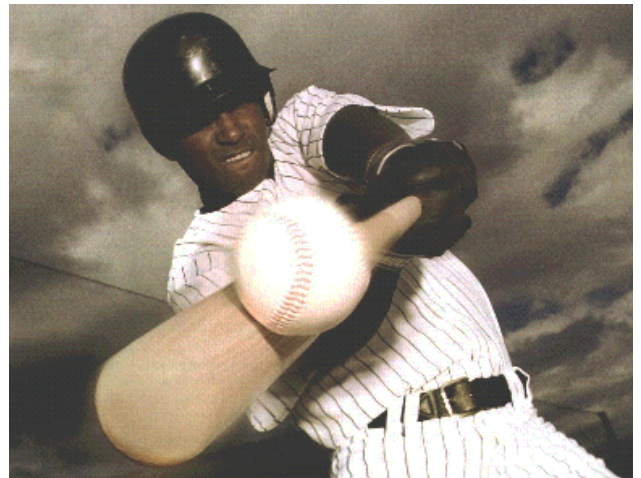
On October 26, 2010, Babe Ruth League Inc. placed a moratorium on composite bats in our 13-15 and 16-18 divisions with all approved models listed at www.nfhs.org.

Go to www.baberuthleague.org and click on Composite Bats for a listing of licensed baseball bats approved for use in the Cal Ripken (Majors) Division and below.

The moratorium on composite bats, which now applies to all baseball division of Babe Ruth League Inc. does not apply to any softball divisions of Babe Ruth.

NOTE: The moratorium on composite bats only applies to composite barreled bats. Bats that have only a metal/alloy in the barrel (and no other material, unless it is in the end cap of the bat) are not subject to the moratorium, regardless of the composition of the handle."

MBSC umpires and coaches will diligently monitor the use of approved baseball bats this year. Please plan accordingly. If you have questions regarding a bat you already own, you may ask your coach or one of the league directors at registration.



MLB player Alfonso Soriano making contact on the sweet spot. This photo appeared on the cover of the September 2004 issue of *The Physics Teacher* to accompany an article about how the coefficient-of-restitution for baseballs depends on humidity. Source: <http://paws.kettering.edu/~drussell/bats.html>



© 2002 John Marshall/Distributed by UFS, Inc.

2011 Calendar of Events

MBSC Commission Meetings

Edgewood College, Deming Way
Next one...March 15th at 7:30PM

Other Exciting Events

April 3 • Competitive Teams Softball Evaluations

April 9 • Competitive Teams Baseball Evaluations
(plan ahead...no alternate tryout dates will be offered)

Softball Open Gym • MHS Fieldhouse Sundays 6-8PM

May 15 • 7th Annual Pig Roast Fund Raiser

June 18 • Special Olympics Softball Invitational

June 25-26 • Dugout Club Youth Baseball Tournament

June 21 • Baseball Clinic-Advanced Catching

June 22-24 • Baseball Summer Camps-Instructional

June 26-27 • Dugout Club Youth Baseball Tournament

July 13-17 • Babe Ruth 13s District Tournament

July 15-17 • MBSC Youth Softball Tournament U12-U14

August 10-11 • Midwest Showcase Softball Event

Sponsors

This month's sponsors include Gingras, Cates & Luebke and Axley Brynelson. Please patronize our sponsors as often as possible. Thank You!

Gingras Cates & Luebke

8150 Excelsior Drive, Madison, WI 53717-1904
(608) 833-2632



Axley Brynelson, LLP

2 E. Mifflin St., Suite 200, Madison, WI 53703
(608) 257-5661 - (800) 368-5661 - (608) 257-5444 (Fax)
axley.com

Do you have something for the newsletter?

The MBSC newsletter welcomes all your ideas.
Contact Mike Schoonveld at mike.schoonveld@mbscwi.com.

April 2011 newsletter article submission deadline is March 15, 2011.

"People ask me what I do in the winter when there's no baseball. I'll tell you what I do. I stare out the window and wait for spring." -- Rogers Hornsby





MBSC Members Directory

Member	Program Director	Phone	Email
Mike Hinz, President	Legion	831-8186 h 575-2401 c	hinz13@tds.net
Stan Haack, Treasurer		527-4463 h 358-0125 c	shaack@bruceco.com
Renee Kalscheuer, Asst Treas		577-8858 c	reneekal@hotmail.com
Brian Drunansky, Secretary		836-5553-h 957-3868-c	
Ken Maly		836-4730 h 219-8467 c	kenmaly@charter.net
Tim Brown, Vice President	South Central - U16	836-9001 h 843-7461 c	tbrown1162@charter.net
Scott Campbell		335-2966 c	scampbell@edgewood.edu
Jerry Gurtner	Triple A	829-1959 h 225-2273 c	j.gurtner@charter.net
Brenda Delabarre	South Central - U12	833-7278-h 513-7278-c	
Mike Land		203-5389 h 770-5645 c	michael.land@bakertilly.com
Doug Olstad	Little Bucks	831-3651 h 628-1563 c	doug.olstad@springswindowfashion.com
Mike Schoonveld		798-1001-h 322-2359-c	tincup@chorus.net mikes@renschler.com
Michelle Schreier		513-3605 h 829-9446 w	mschreier33@gmail.com
Tom Schmitt, Past President	Pepper	836-1070 h 712-0200 c	coachs35@tds.net tschmitt@mcpasd.k12.wi.us
Jay Smith		833-8792 h 445-3611 c	jsmi17@amfam.com
Don Stephan	Cal Ripken Jr	833-3103 h 235-2489 c	dn751@tds.net
Associate Members			
Brad Novinski	Babe Ruth	831-7125 h 576-9176 c	bjnovinski@charter.net
Brad Woodall	Instructional	213-6261-c	brad@woodalltraining.com
Amy Gangl	Little Brewers & Cardinals	843-7956-h 203-5859-c	
Steve Kelliher		203-5772-h 516-4535-c	
Dan Hewuse		770-5930-c	
Non-Member Programs Directors			
Perry Hibner	South Central - U10	828-9891 h	
Sal Parente	South Central - U14	203-5959 h 695-5251	
Dan Stormer	South Central - U18	798-1262 h 209-4106	dlas@chorus.net
Brenda Ziegler	Softball Recreational	836-5632 h 235-6298	playball13@hotmail.com

Mission Statement: MBSC shall administer and implement a complete, healthful, meaningful and wholesome community baseball and softball program, which will afford each participant the opportunity to play organized ball, which is dedicated to the highest standards of sportsmanship, fair play and competition.



MBSC Committees

Concessions: Tim Brown, Renee Kalscheuer, Michelle Schreier, Brenda Delabarre

Tournaments: Jay Smith, Brad Novinski, Brian Drunansky

Fund Raising: Mike Land, Brenda Delabarre

Communications/Newsletter: Mike Schoonveld

Online Registration/Scheduling Software: Tim Brown, Michelle Schreier

Technology/Website: Jay Smith, Mike Schoonveld

Evaluations: Open

Field Scheduling: Mike Hinz, Tim Brown

Player & Coach Development: Tom Schmitt, Steve Kelliher, Brad Woodall, Scott Campbell, Dan Hewuse

Player Agent: Open

Pig Roast/Silent Auction: Doug Olstad, Jerry Gurtner, Mike Land, Tom Schmitt, Scott Campbell, Mike Schoonveld, Ken Maly, Dan Stormer

Ad Hoc: Open

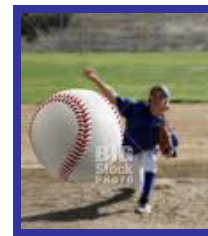
Volunteer Coordinator: Amy Gangl, Ken Maly, Doug Olstad

Coaches Meeting: Tom Schmitt, Don Stephan

Purchasing: Don Stephan, Jerry Gurtner, Tim Brown

Safety: Steve Kelliher, Jay Smith, Tom Schmitt, Stan Haack

Job Descriptions: Scott Campbell



Newsletter: Mike Schoonveld, Editor • Connie Dey-Marcos, Layout & Design

Softball Word Search

G N W R M X J Z J W P O P F L Y A H
P Y W E U D B H P Z E S G Y G R C R
O P H P N N U U G Q Q B N J L L D M
H R G A I Y B U R U U S O Q F K F P
S J W A L K X A E N S F I W O R G U
A Y H B O I H E T O Q M U P R K Y I
C C L S R K Z T N T K A N O C M P N
R K U Q F E T U G I E U L B E D W W
I W M R P O Z K R P M D T L O Q K E
F X G L V Q F T A S H E I D U V P O
I E A I L E M J N B T S K N T M K X
C Y I M H V B B D B K R Y N N U U K
E U M R D R R A S Q Y R I X P F N P
F Y F O T D Y T L C P I N K F B N L
L F Y O K H C I A L V Y P R E J B G
Y S P R T N G L M O E L V U P O G K
J F P F Q K G S X N G Q M A L J U V
T D E S I G N A T E D H I T T E R T

Pop fly	Walk	Bunt
Strikeout	Grand slam	Forceout
Designated hitter	Squeeze play	Curveball
Sacrifice fly	Run batted in	